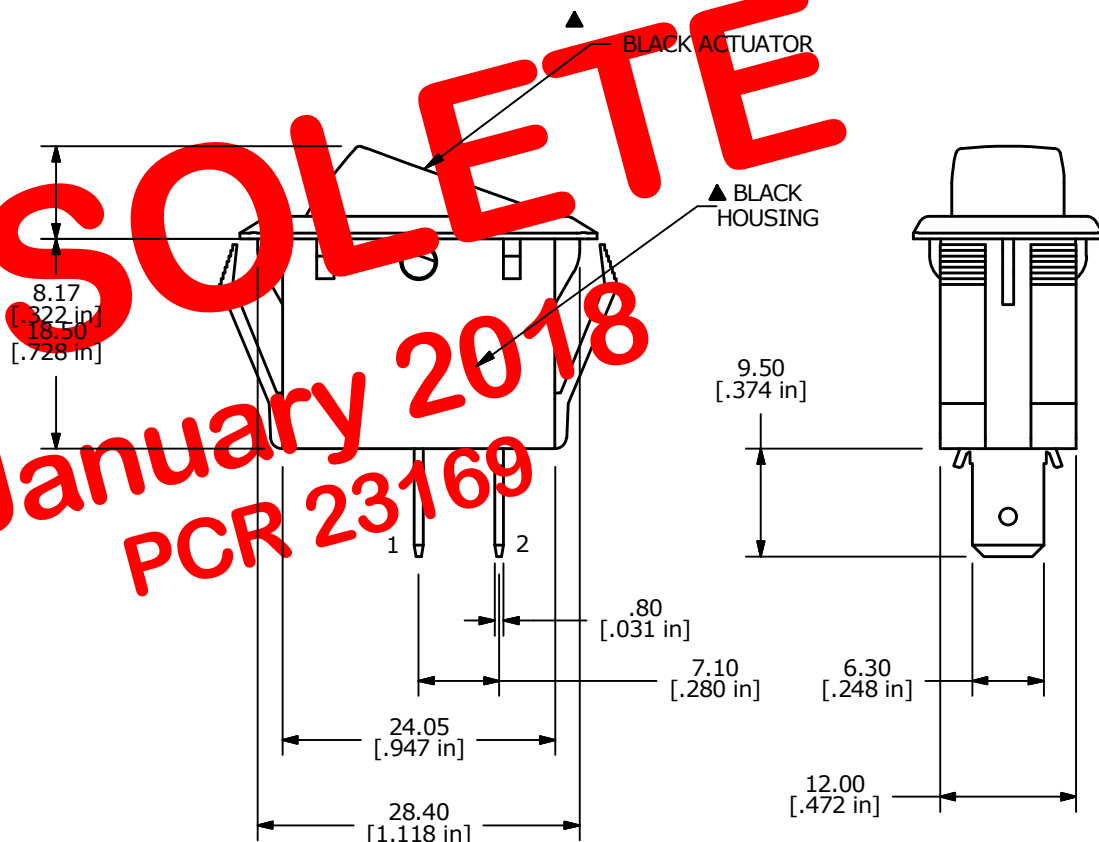


- NOTES:
1. ALL DIMENSIONS IN MM [INCH]
 2. GENERAL TOLERANCE: X.X=±0.4
X.XX=±0.25
 3. TERM. NOS. FOR REF. ONLY
 - ▲ 4. RATING: 20A @125VAC;
16A @250VAC.
 5. ELECTRICAL LIFE: 10,000 CYCLES MIN.
 6. CONTACT RESISTANCE: 20 Milli-OHMS MAX.
 7. OPERATING TEMP: -20°C TO 85°C
 8. DIELECTRIC STRENGTH: >1,000V AC 1MIN
 9. LAMP VOLTAGE: NONE
 10. ▲ DENOTES CRITICAL PARAMETER.
 11. 2002/95/EC (ROHS) COMPLIANT.

OBSOLETE
 January 2018
 PCR 23169



A	20715	New Release	8/23/12	rc
REV	PCR NO	DESCRIPTION	DATE	BY

TITLE RSCF141D1100				
SCALE	DATE	DR	DWG	REV
1.5 : 1	8/23/2012	RC	38-RSCF141D1100	A

THE INFORMATION CONTAINED IN THIS DOCUMENT IS PROPRIETARY TO E-SWITCH AND IS NOT TO BE COPIED OR TRANSFERRED